
Printer Driver for HP DeskJet 5550 Installation

The 4287A with the following serial numbers is required to install the printer driver for operating HP DeskJet 5550 with it. This installation is not required if the driver has already been installed into the 4287A.

4287A serial numbers: JP1KG00101 through 754

NOTE

The 4287A with the printer driver for HP DeskJet 550C of Windows 98 operating system is available for operating the HP DeskJet 5550. This manual describes how to install the printer driver for HP DeskJet 550C into the 4287A.

Required Equipment

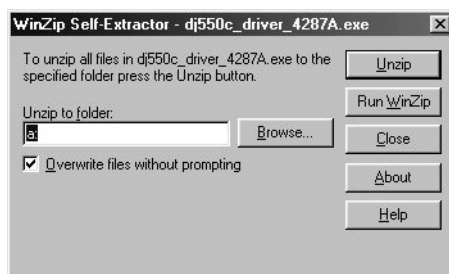
- 4287A (with keyboard and mouse).
- HP DeskJet 5550
- Parallel cable
- one floppy disk

How to make Printer Driver Installation Disk

The following is the procedure to make the Printer Driver Installation Disk.

Step 1. Copy the file “dj550c_driver_4287A.exe” from Agilent Technologies web site onto the floppy disk using your computer’s FDD.

Step 2. Double-click the “dj550c_driver_4287A.exe”. The Self-Extractor window appears.



4287apd017

Step 3. Press **Unzip**. Then confirm the message that you successfully extract the files, and click **OK**. The files are extracted onto the floppy disk.



4287apd018

Step 4. Press **Close**. The Self-Extractor window closes.

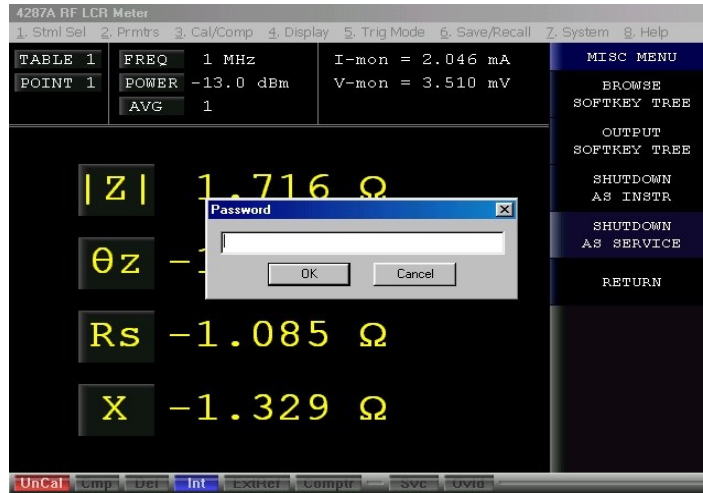
How to install Printer Driver

The following is the procedure to install the printer driver.

- Step 1.** Prepare the Printer Driver installation disk.
- Step 2.** Connect the mouse and the keyboard to the 4287A rear panel. Then turn the 4287A on.
- Step 3.** Press **[System]** key on the 4287A front panel, and press **SERVICE MENU**, **MISC MENU**, **SHUTDOWN AS SERVICE** softkeys. Then Figure 1 is displayed.

Figure 1

Shutdown Menu



- Step 4.** Type password “kid” and click **OK**. The 4287A shutsdown automatically.
- Step 5.** Press the 4287A power line switch twice to turn the 4287A on. Then Figure 2 is displayed.

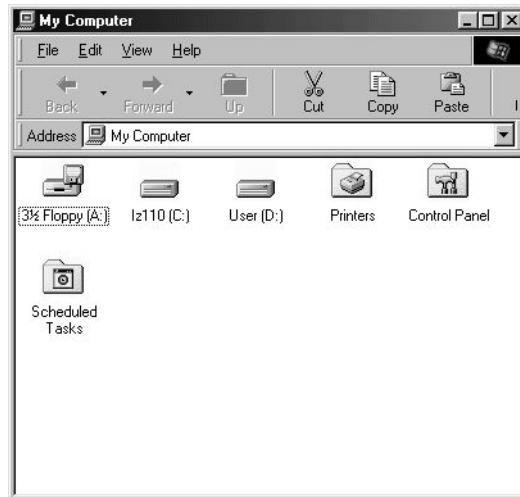
Figure 2

Windows screen after the service mode boot

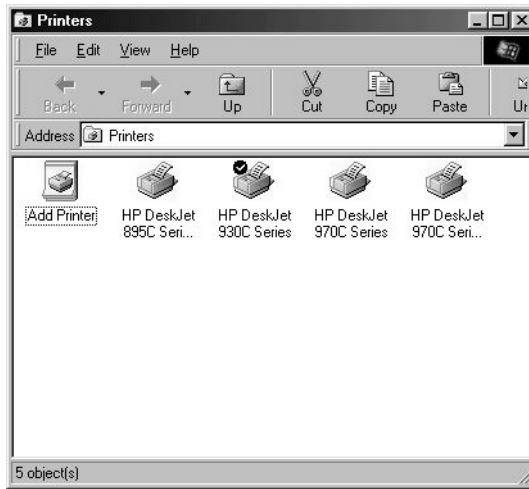


- Step 6.** Double-click the “**My Computer**” icon on the Windows desktop.
- Step 7.** Install the printer driver for the DeskJet 550C.

1. Connect the HP DeskJet 5550 printer to the parallel port of the 4287A using the parallel cable furnished with the printer, and turn on the printer.
2. Double-click the “Printers” icon.

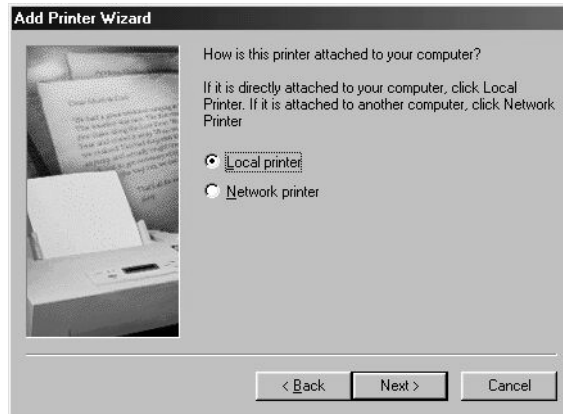


3. Double-click the “Add printer” icon in the Printers windows to start Add Printer Wizard.



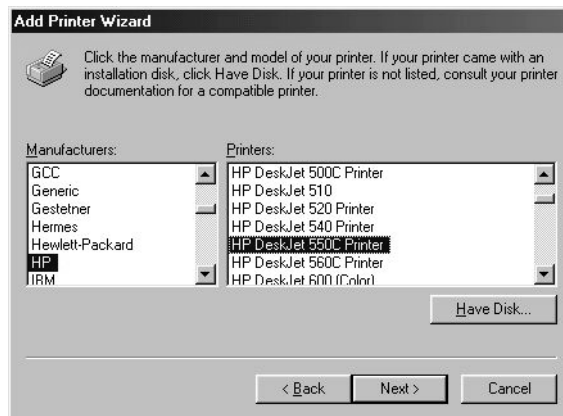
4. On the first screen of Add Printer Wizard, click **Next**. When the screen shows as in

figure below, check that “Local printer” is selected and click **Next**.



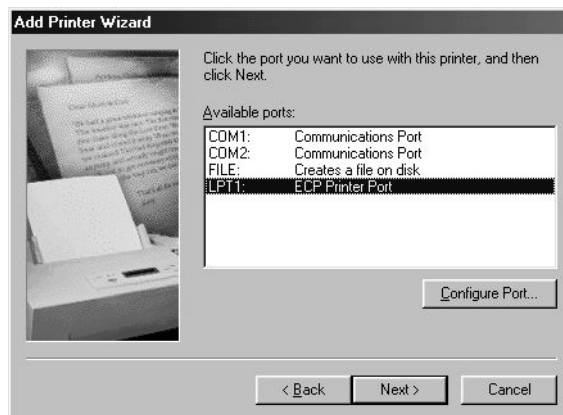
4287apd003

5. The screen to select the manufacture and model name of the printer appears. Select the manufacture **HP** and the printer name **HP DeskJet 550C Printer**, and click **Next**.



4287apd004

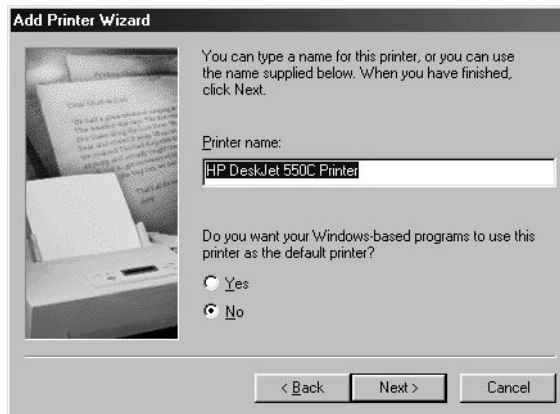
6. The screen to select the connection port appears. Select **LPT1** and click **Next**.



4287apd005

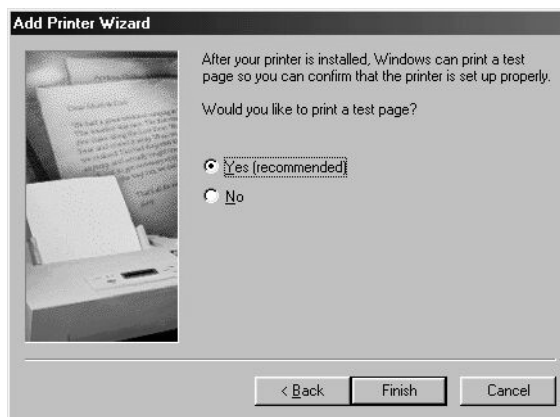
7. The screen to enter the printer name appears. Enter the printer name, select whether to set it to the default printer, and click **Next**. Use printer name you have specified here

when selecting the printer in the Printer Setup Dialog Box.



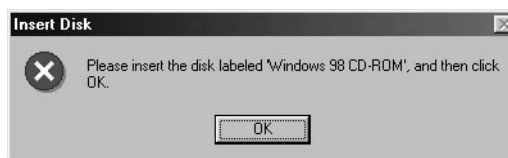
4287apd006

8. The screen to select to print a test page appears. Select “Yes”, and click **Finish**.



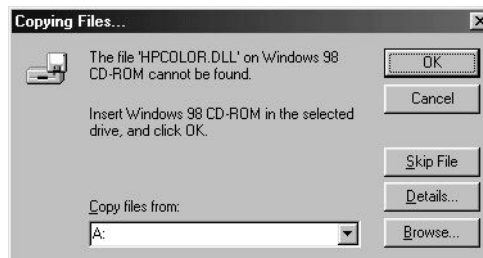
4287apd007

9. The Insert Disk window appears. Click **OK**.



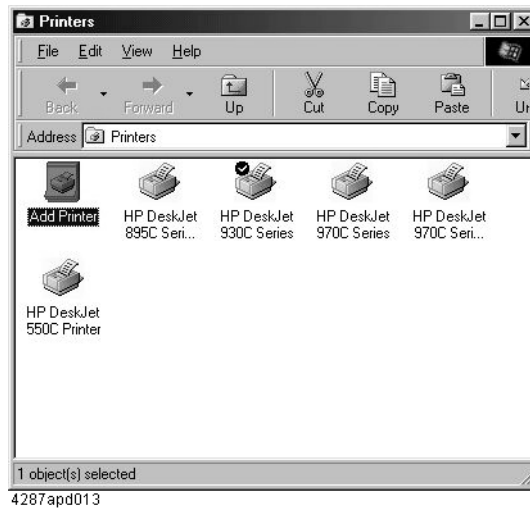
4287apd008

10. The Copying Files .. window appears. Insert the Printer Driver Installation disk you have made into the FDD of the 4287A. And then select the A drive in the **Copy files from** box, and click **OK**.

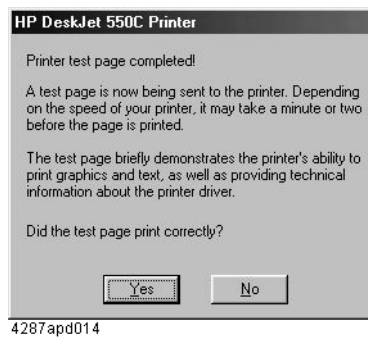


4287apd012

11. Confirm that the printer name you have specified is displayed on the Printer window.



12. If you select “Yes” to print a test page, the test page is printed. Then the HP DeskJet 550C Printer window appears. Confirm the test page is printed correctly, and click **Yes**.



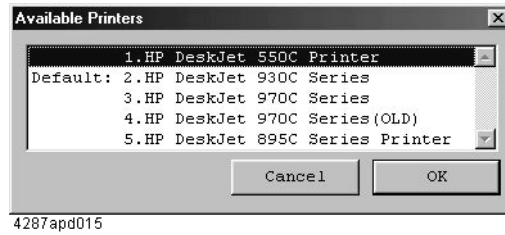
Step 8. Change from service mode to instrument mode.

1. Double-click the “**4287A RF LCR Meter**” icon.
2. Press **[System]** key on the 4287A front panel, and press **SERVICE MENU, MISC MENU, SHUTDOWN AS INSTR** softkeys.
3. Type password “kid” and click **OK**. The 4287A shutdowns automatically.
4. Press the 4287A power line switch twice to turn the 4287A on.

Step 9. Select the printer name you have installed in the printer driver.

1. Press **[Display] - PRINT MENU -SELECT DEFAULT PRINTER**.
2. The Available Printers dialog box appears. Select the printer name and set up the

printer, and click **OK**.



Step 10. Confirm that the HP DeskJet 5550 works properly.

1. Press **[Display] - PRINT MENU**. Select the image format you want to print, and press **PRINT**. For details, refer to the Data Output chapter of the 4287A User's Guide.
2. Confirm that the screen image is printed properly.